

Length // ► Feed direction

Width



No. 152

Figure drawn to scale 1:1

No. 152



Available materials*



Steel

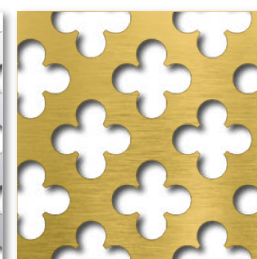
Sendzimir-galvanised

Aluminium

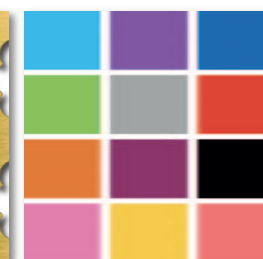
Copper



Titanium Zinc

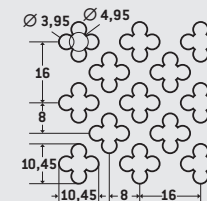


Brass



Powder-coated

Available in standard formats and **individual dimensions (w x l)** of at least **125 x 300 mm** to maximum **1,500 x 3,000 mm**, as well as in sheet thicknesses from **1.0 to 2.0 mm**.



Creativ Line
Open area: 45 %

* Not all materials available in all formats and sheet thicknesses.



.....
SELECT AND ORDER
ONLINE
.....

All variants of this product can be found online in our shop. Simply enter the product name in the online search.

